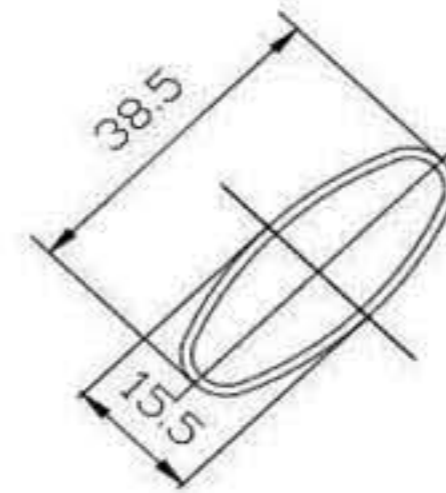
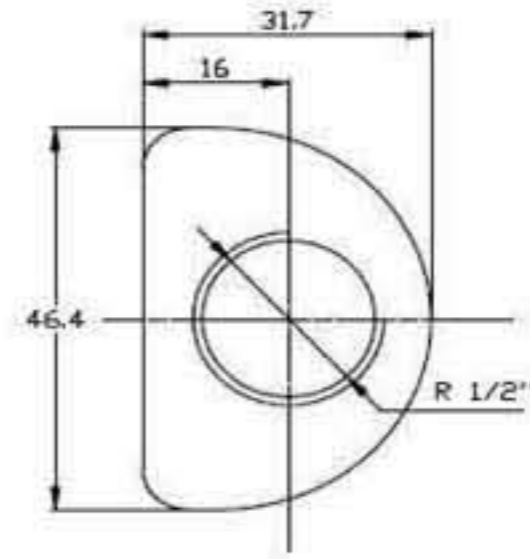
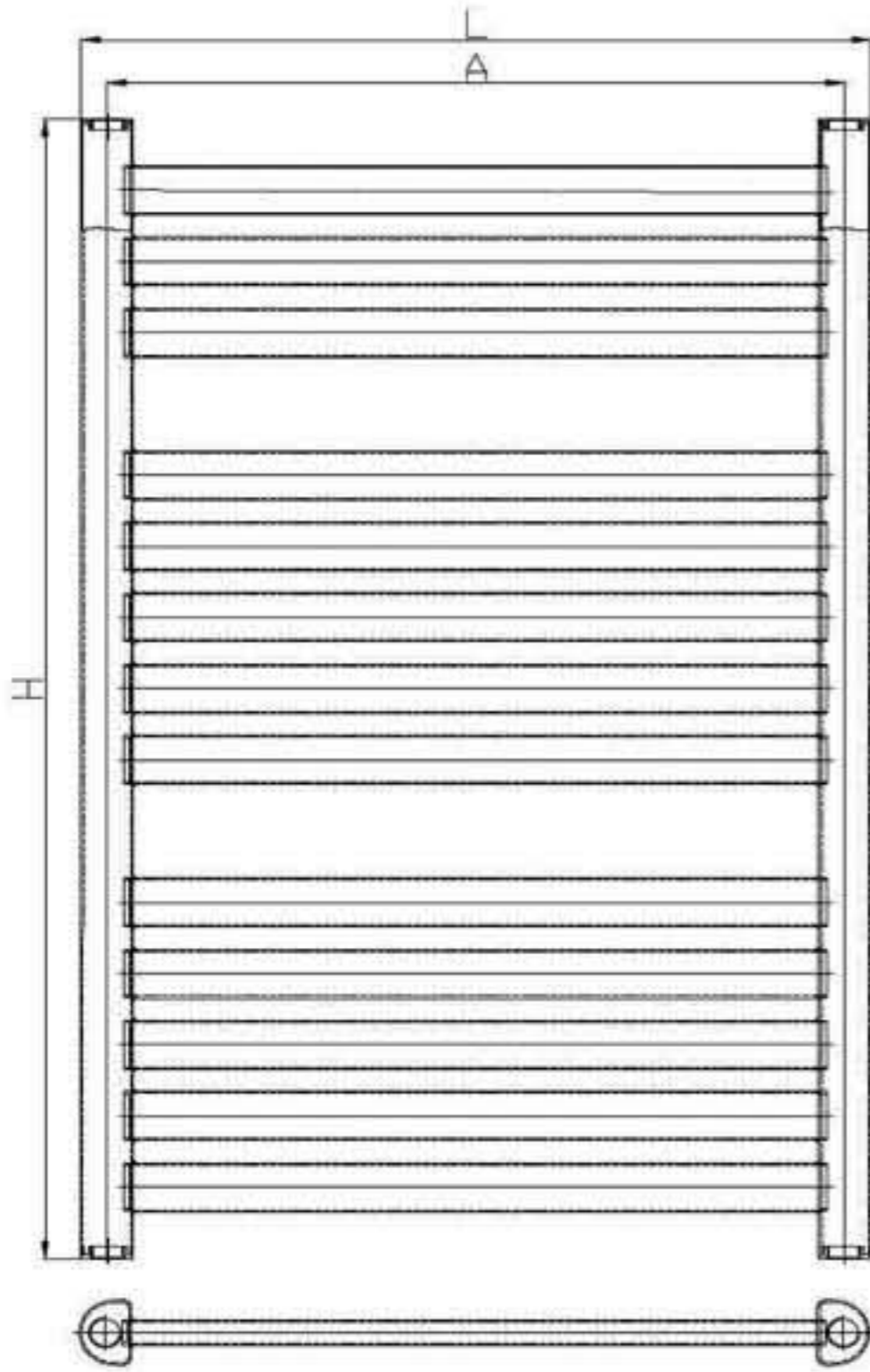


所有型号板式散热器20度室温时的散热表。  
(该表所有数据由德国斯图加特HLK热能科学院监测颁发)



sizes (mm)		axis (mm)	no. of tubes	water volume (lt)	weight (kg)	EN 442 75 / 65 - 20C		EN 442 90 / 70 - 20C	
width	height					painted		painted	
						watt	kcal/h	watt	kcal/h
400	600	368	10	2,50	4,80	256	221	313	270
400	800	368	13	3,30	6,25	334	288	411	354
400	1000	368	16	4,10	7,70	411	354	508	438
400	1200	368	19	5,00	9,10	487	420	602	519
400	1400	368	22	5,90	10,50	564	486	698	602
400	1600	368	25	6,7	11,95	641	553	797	687
400	1800	368	28	7,50	13,40	719	620	897	773
500	600	468	10	2,90	5,63	311	268	382	329
500	800	468	13	3,81	7,33	404	348	498	429
500	1000	468	16	4,73	9,03	498	429	615	530
500	1200	468	19	5,73	10,69	591	509	731	630
500	1400	468	22	6,73	12,35	684	590	847	730
500	1600	468	25	7,64	14,06	777	670	966	833
500	1800	468	28	8,55	15,78	872	752	1,088	938
600	600	568	10	3,30	6,45	363	313	448	386
600	800	568	13	4,33	8,40	473	408	584	503
600	1000	568	16	5,35	10,35	582	502	719	620
600	1200	568	19	6,45	12,28	691	596	855	737
600	1400	568	22	7,55	14,20	800	690	992	855
600	1600	568	25	8,58	16,18	909	784	1,130	974
600	1800	568	28	9,60	18,15	1,020	879	1,272	1,097
800	600	768	10	4,10	8,10	466	402	580	500
800	800	768	13	5,35	10,55	606	522	751	647
800	1000	768	16	6,60	13,00	746	643	922	795
800	1200	768	19	7,90	15,45	885	763	1,096	945
800	1400	768	22	9,20	17,90	1,025	884	1,274	1,098
800	1600	768	25	10,45	20,40	1,165	1,004	1,45	1,25
800	1800	768	28	11,70	22,90	1,306	1,126	1,628	1,403